

Double Arm Flat Screen Wall Mount with Tilt and Swivel

For more information please visit www.btechavmounts.com/BT7515

BT7515

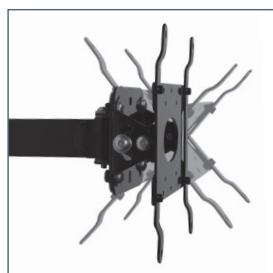
Registered Design Number: 000389994-0003



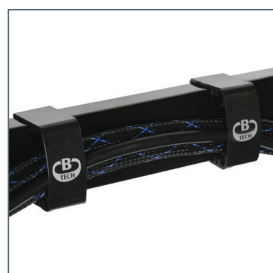
BT7515 Double Arm Flat Screen Wall Mount with Tilt and Swivel

Designed for medium flat screens up to 42" (107cm) / 25kg (55lbs)

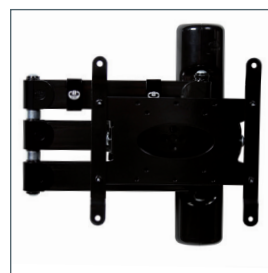
- Fits screens with VESA mounting patterns: 75 x 75mm, 100 x 100mm, 200 x 100mm and 200 x 200mm
- Easy tilt adjustment +/-40°
- Features three swivel points: 180° at wall, 360° at central pivot and 240° at interface
- **CLIPLOGIC™** cable management included
- Security locking screws and Allen key provided for secure installation
- Simple 'hook-on' installation with all mounting hardware included
- Available in Piano Black and Silver



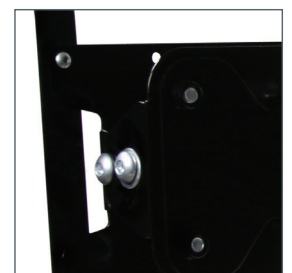
Easy adjustment of tilt



CLIPLOGIC™ cable management



Space saving design - folds flat to the wall



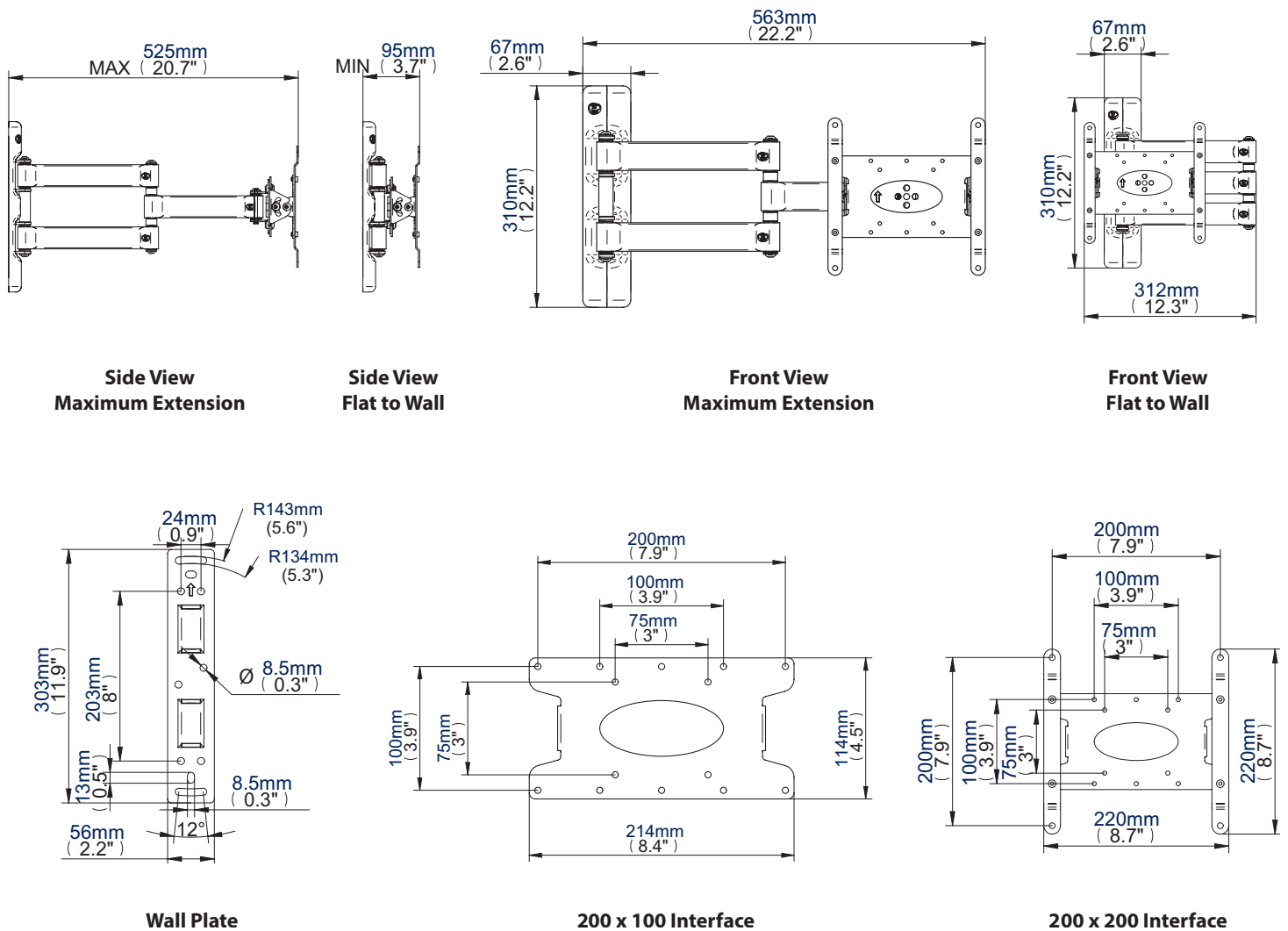
Security locking screws provided

Double Arm Flat Screen Wall Mount with Tilt and Swivel

For more information please visit www.btechavmounts.com/BT7515

BT7515

Registered Design Number: 000389994-0003



Side View
Maximum Extension

Side View
Flat to Wall

Front View
Maximum Extension

Front View
Flat to Wall

Wall Plate

200 x 100 Interface

200 x 200 Interface

Colour:	Order Ref:	EAN Code:	Master Carton Qty:	Inner Carton Qty:	Master Carton Weight:	Master Carton Cube:
Piano Black	BT7515/PB	5019318750151	2	N/A	9.32kg (20.5lbs)	0.033cbm (1.15cuft)
Silver	BT7515/S	5019318750168	2	N/A	9.32kg (20.5lbs)	0.033cbm (1.15cuft)

This information is intended as a guide only and reflects the current specification at the time of print. B-Tech accepts no liability for the accuracy of the information contained in this document.